

Sand Martin
(*Riparia riparia*)

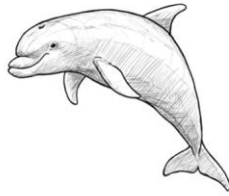


Cliffs

Day

- Bird
- Usually 12-14 cm
- Wingspan up to 13 inches
- Brown and white upper parts
- Under feathers are white with brown breast band extending to stomach
- Triangle shaped tail

Common Bottlenose Dolphin
(*Tursiops truncatus*)

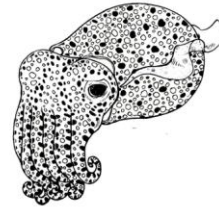


Coastal / Deeper Water

Day / Night

- Marine mammal
- Around 2m in length
- Light, silver underbelly
- Darker dorsal side
- Triangular shaped dorsal fin
- Elongated, narrow snout - like a bottle
- Usually swim in pods

Bobtail Squid
(*Sepioteuthis sepioides*)



Bottom Of The Seabed

Day / Night

- Cephalopod
- Usually 3cm
- Have 8 suckered arms and 2 smaller tentacles
- Reddish/ yellow/ orange in colour
- but can adapt slightly to camouflage
- 2 fins on their mantle which look like wings

Moon Jellyfish
(*Aurelia aurita*)



Shallows / Deeper Water

Day / Night

- Invertebrate
- Range from 1-40cm
- Round, dome-shaped jelly
- Usually floating just below the surface
- Often are washed up on beaches
- Four purple circles visible through the bell

Sea Hare (*Aplysia punctata*)



Shallows/ Rockpools / Seagrass

Day / Night

- Marine snail
- Usually 7-20cm
- Reddish-maroon colour (can be green or brown)
- Pair of tentacles on their head,
- like a hare, which gives them their name!
- Have large 'wings' on both sides of body

Whiting

(*Merlangius merlangus*)

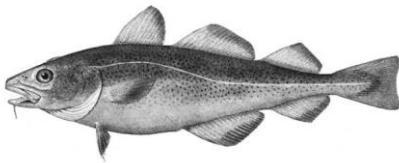


Shallows

Day / Night

- Fish
- Usually 30-40 cm
- Brown/green colour with silver underside
- 3 dorsal fins
- Large eyes and mouth
- Long body, narrowing towards fan-like tail
- Line high on body, which runs from the head to mid-body

Atlantic Cod (*Gadus morhua*)

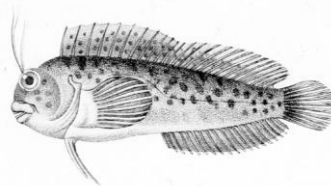


Shallows / Sandy Seabed

Day / Night

- Fish
- Usually 70-80cm
- Brown/green colour
- Tapered body with distinct tiger-like markings
- Line running from head to mid-body
- Has a chin barbel
- Tail is squared
- 3 dark dorsal fins
- 2 dark anal fins

Tombot Blenny
(*Parablennius gattorugine*)



Bottom Of The Seabed

Day / Night

- Fish
- Usually 20-30cm
- Orange/brown colour
- Mottled markings and dark bands running down body
- Two large tentacles on the head, which look like antlers!
- Long dorsal fin, which extends along the back

15 Spine Stickleback (*Spinachia spinachia*)



Shallows / Sandy Seabed

Day / Night

- Fish
- Usually 15-20 cm
- Brown/olive colour
- Elongated, slender body
- Dorsal and anal fins are opposite each other
- Rounded tail
- Has 14-17 separate spines in front of the dorsal fin

Short-Snouted Seahorse
(*Hippocampus hippocampus*)



Bottom Of The Seabed/
Shallows

Day /
Night

- Fish
- Usually 15cm
- Brown to yellow in colour, with distinctive bands and black markings along
- body
- Brush-like dorsal fin
- Has a short, upturned snout
- Curved body with curled tail

Greater Pipefish (*Syngnathus acus*)

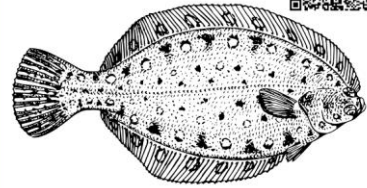


Shallows / Sandy Seabed

Day /
Night

- Fish
- Usually 10-30cm
- Pale brown to greenish brown with darker bands along the body
- Has a long snout
- Long body (often called a straightened seahorse)
- Distinctive hump on top of head behind eyes

Plaice
(*Pleuronectes platessa*)

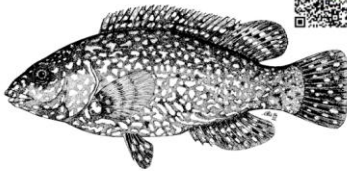


Bottom of the seabed

Day /
Night

- Fish
- Usually 20-30cm
- Diamond-shaped
- Two eyes on one side
- Brown colouration with red or orange spots
- Fan-like rounded tail
- Dorsal and anal fins extended along both sides of the body

Ballan Wrasse (*Labrus bergyllta*)

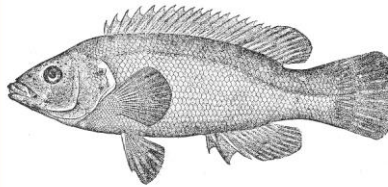


Shallows / Sandy Seabed

Day /
Night

- Fish
- Usually 18-25cm
- Has a broad body
- Reddish brown to dark green colouration
- Has light spots
- over body
- Single, long dorsal fin extending all away along the back
- Rounded tail

Cuckoo Wrasse
(*Labrus mixtus*)

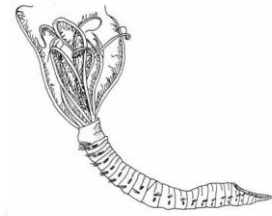


Rocky Shores / Shallows

Day /
Night

- Fish
- Usually 20-30cm
- Large and slender
- Very colourful markings (most colourful fish in the UK)
- Females are orange with black spots
- Males have electric blue stripes

Fanworm (*Bispira voluticornis*)

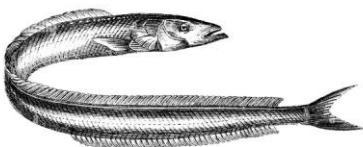


Shallows / Sandy Seabed

Day /
Night

- Worm
- Up to 40cm long
- Lots of tentacles coming from the head, called a fan (compared to a feather duster)
- Fan can be white, yellow or brown
- Long, brown flexible body

Lesser Sand Eel
(*Ammodytes tobianus*)



Rocky Shores / Shallows

Day /
Night

- Fish
- Usually 10-20cm
- Silver colouration
- Are found buried in the sand
- Very slim, elongated body
- Have a pointy jaw
- Small tail, which looks like a fork

Herring gull (*Larus argentatus*)



Rocky Shores / Muddy Shores/ Estuaries

Day /
Night

- Bird
- White head with large yellow beak and pink legs
- Have white feathers,
- grey wings with black wingtips
- Can have a wingspan up to 1.6m
- Can dive to 6 ft to catch prey

Small-spotted catshark
(*Scyliorhinus canicula*)



Mermaid's purse

Rocky Shores / Shallows

Day /
Night

- Fish (shark)
- Usually 50-80cm
- Has large, cat-like-eyes and creamyskin that is covered in brown spots
- Baby catsharks develop in mermaid's purses and wash up on beaches when the catsharks have hatched!

Hermit crab (*Pagurus bernhardus*)

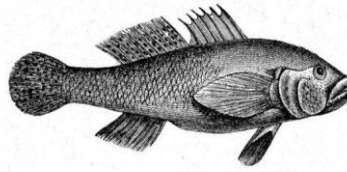


Rocky Shores / Shallows

Day / Night

- Crab body
- Live inside empty sea snail shells
- Right-hand pincer is larger than the left
- Reddish-brown
- Have round eyes

Two-spot goby (*Gobiusculus flavescens*)



Rocky Shores / Shallows

Day / Night

- Fish
- Usually 10cm
- Long, slender bodies
- Brown markings
- Two dorsal fins
- Fan-like tail
- Large mouth and eyes

Seagrass (*Zostera marina*)

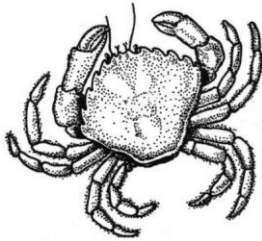


Shallows / Deeper Water

Day / Night

- Plant
- Usually around 30-50cm
- Dull green in colour
- Grow in meadows
- Each individual leaf has rounded tips
- Can be floating or completely underwater

Shore crab (*Carcinus maenas*)

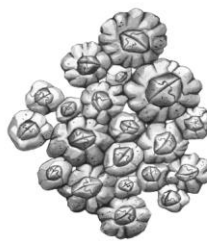


Rocky Shores / Shallows

Day / Night

- Crab
- Usually between 4-9cm
- Normally green, but can be brown to red/orange
- Has a clam shaped shell
- Hides under rocks

Barnacle (*Pollicipes pollicipes*)



Rocky Shores / Attached to rocks

Day / Night

- Invertebrate
- White-grey in colour
- Smaller than an inch
- Are seen in groups, attached to hard surfaces

Snakelocks anemone (*Anemonia viridis*)

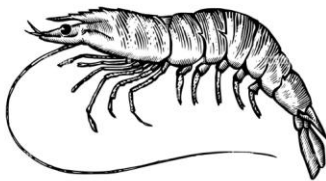


Rocky Shores / Seabeds / Shallows

Day / Night

- Anemone
- Usually around 8cm wide
- Normally attached to hard surfaces
- Have long, wavy, bright green tentacles
- Tentacles have purple tips

Shrimp (*Palaemon serratus*)

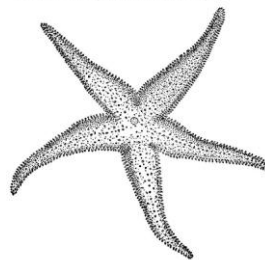


Rocky Shores / Seabeds

Day / Night

- Invertebrate
- Usually 4-10cm
- Transparent body
- Has dark brown stripes along body
- Yellow and blue banded legs
- Has a fanned tail
- Two pairs of long antennae

Starfish (*Asterias rubens*)



Rocky Shores / Seabeds

Day / Night

- Invertebrate
- Usually 10-30cm
- Orange colour
- They have 5 symmetrical arms
- Have many pale spines along body
- Are mostly found under rocks in groups

Oystercatcher (*Haematopus ostralegus*)

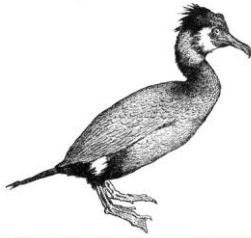


Rocky Shores / Muddy Shores

Day / Night

- Bird
- Large, stocky
- Can have a wingspan up to around 80cm
- Black and white feathers
- Pink/red legs
- Orange / red beak
- Can be seen wading in shallow waters

Cormorant (*Phalacrocorax carbo*)

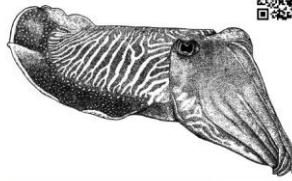


Rocky Shores / Coastal Lagoons / Estuaries

Day / Night

- Bird
- Can have a wingspan up to 160cm
- Have brown and black feathers
- Have white patches on their thighs and under their chins
- Big, triangular head with large beak

Cuttlefish (*Sepia officinalis*)

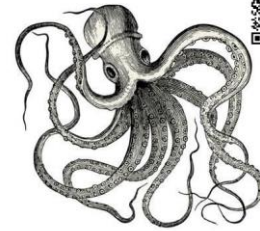


Sandy seabed / Seagrass / Rocky shallow water

Day / Night

- Cephalopods
- Can grow up to 45cm
- Normally a brown / orange colour but can alter their colour
- Have 8 arms with suckers
- Have two tentacles around the mouth
- Beak like jaws and very large eyes

Octopus (*Octopus vulgaris*)

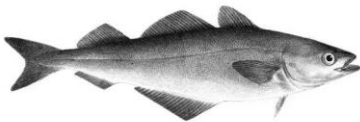


Sandy seabed / Seagrass / Rocky shallow water

Day / Night

- Cephalopods
- Orange brown colouration but can alter colour slightly to blend in
- Have 8 tentacles covered in two rows of suckers
- Can squeeze through tight space and hide in small crevices

Pollock (*Pollachius pollachius*)

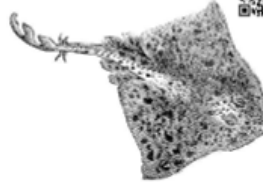


Shallow waters / Seagrass

Day / Night

- Fish
- Can grow up to 4ft
- Grey in colour with a silver underbelly
- Has three dorsal fins
- Has a small barbell coming out of their chin

Thornback Ray (*Raja clavata*)



Sandy seabed / Seagrass bottom

Dusk / Night

- Fish (Ray)
- Can grow up to 1m
- Have blotchy brown patterns that acts as camouflage on the seabed
- Has a collection of thorn-like spines on back and tail
- Light orange / brown pattern

Dog Whelk (*Nucella lapillus*)

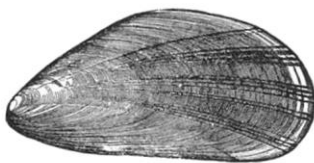


Lower Shore / Gaps in the rocks

Day / Night

- Shellfish
- White / Yellow
- 3-6 cm
- Hard exterior shell
- Spiral shell similar to a snails
- Has a groove on the underside of the shell

Common Mussel (*Mytilus edulis*)

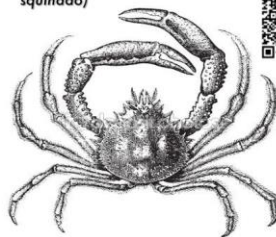


Shore / Shallows attached to rocks

Day / Night

- Shellfish
- Blue / Black / Purple
- Up to 10 cm
- Hard exterior, triangular shell
- Attaches to rocks in large 'beds' of mussels

Spider Crab (*Maja squinado*)

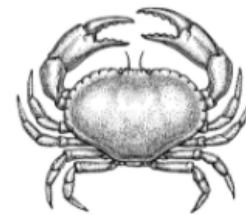


Sandy seabed / Seagrass

Day / Night

- Crab
- Red / brown
- White tips on the claws
- The body can grow up to 20 cm
- Spines and bumps found all over the shell
- Largest species of crab in Europe

Edible Crab (*Cancer pagurus*)



Land / Sandy seabed / Seagrass

Day / Night

- Crab
- Orange / brown / pink
- Black tips on the claws
- Up to 20 cm
- Smooth appearance
- Pie-crust style shell
- Hides under rocks

Gwennol y Glennydd
(*Riparia riparia*)

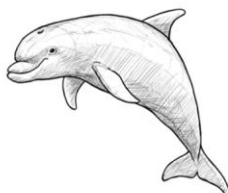


Clogwyni

Dydd

- Aderyn
- Fel arfer 12-14cm
- Lled esgyllan i 13 modfedd
- Phuen uwchben yn frown a wyn
- Phuen o dan yn wyn gyda band bron brown sy'n esyn i'r stumog
- Cynffon trianglog

Dolffin Trwynbwl
(*Tursiops truncatus*)

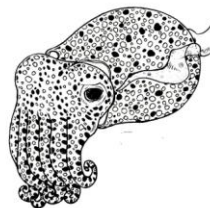


Arfordirol / Dŵr Mwy Dwfn

Dydd / Nôs

- Mamol y môr
- Fel arfer 2m
- Tor golau, arian
- Cefn mwy tywyll
- Asgell y cefn trianglog
- Trwyn hir, cul - fel potel
- Fel arfer yn nofio mewn ysgol (grwpiau)

Môr-Lawes Ceffyl Cwta
(*Sepiolo atlantica*)



Gwely yr Môr

Dydd / Nôs

- Seffalopod
- Fel arfer 3cm
- Cael 8 braich gyda sugnwr a dau dental bach
- Lliw coch/melyn/oren
- ond gallu addasu i guddliwio
- 2 asgell ar fantell sy'n edrych fel adain

Sglefren Fôr y Lleuad
(*Aurelia aurita*)



Dŵr Bas / Dŵr Mwy Dwfn

Dydd / Nôs

- Infertebrat
- Rhwng 1-40cm
- Jeli rownd, siâp-cromen
- Fel arfer yn arnofio iyst o dan yr wyneb y môr
- Yn aml yn golchi lan ar draethodd
- Pedwar cylch porffor gallet weld trwy'r gloch

Ysgyfarnog y Môr (*Aplysia punctata*)

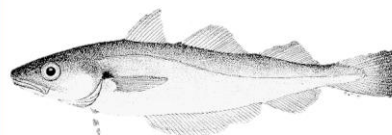


Glannau Rhynglanw/ Morwellt

Dydd / Nôs

- Malwen y môr
- Rhwng 7-20cm
- Lliw coch/marwn (gallu bod yn wyrdd/brown)
- Pâr o dentalclau ar y pen, fel ysgyfarnog, sy'n rhoi'r enw iddyn nhw!
- Cael adenydd hir ar y ddau ochr o'i gyrff

Gwyniad y Môr
(*Merlangius merlangus*)

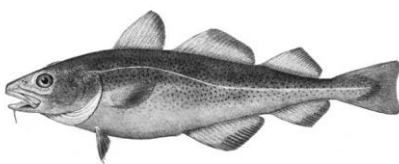


Dŵr Bas

Dydd / Nôs

- Pysgod
- Fel arfer 30-40cm
- Lliw brown/gwyrdd gyda thor arian
- 3 asgell y cefn
- Corff hir sy'n meinhaus i'r
- cynffon sy'n edrych fel ffan
- Llygaid a cheg fawr
- Llinell uchel ar y corff, o'r ben i ganol y corff

Penfras yr Atlantig (*Gadus morhua*)

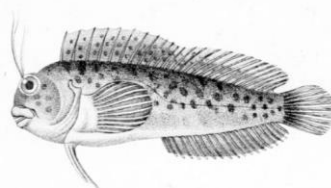


Dŵr Bas / Gwely y Môr / Dŵr Mwy Dwfn

Dydd / Nôs

- Pysgod
- Rhwng 70-80cm
- Lliw brown/gwyrdd
- Corff sy'n meinhaus gyda stripiau fel teigr
- Llinell o'r ben i ganol y corff
- Barfogyn ar y gen
- Cynffon wedi'i sgwario
- 3 asgell y cefn
- 2 asgell rhefrol

Blenny Tombot
(*Parablennius gattorugine*)



Gwely y Môr

Dydd / Nôs

- Pysgod
- Fel arfer 20-30cm
- Lliw oren/brown
- Smotiau a bandiau tywyll yn rhedeg lawr y corff
- Dau dental mawr ar y pen, sy'n edrych fel corn carw!
- Asgell y cefn hir, sy'n estyn ar draws y cefn

Silodyn y Môr (*Spinachia spinachia*)



Dŵr Bas / Gwely y Môr

Dydd / Nôs

- Pysgod
- Fel arfer 15-20cm
- Lliw brown/gwyrdd olewydd
- Corff hir, man
- Asgell y cefn ac asgell rhefrol yn gyfeirwedd ei gyllydd
- Cynffon rownd
- Cael 14-17 pigyn gwahanolo fflan asgell y cefn

Morfeirch Trwynog Byr
(*Hippocampus hippocampus*)



Gwely y Môr / Dŵr Bas

Dydd / Nôs

- Pysgod
- Fel arfer 15cm
- Lliw brown/melyn, gyda bandiau a phatrymau du
- nodweddiadol ar draws y corff
- Asgell y cefn fel brwsh
- Cael trwyn byr, sy'n troi lan
- Corff siapus gyda chynffon wedi'i gyrlio

Pibell Fôr (*Syngnathus acus*)



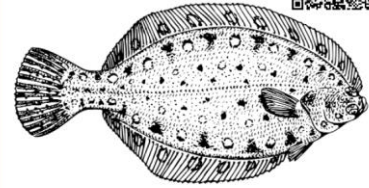
Shallows / Sandy Seabed

Day / Night

- Fish
- Usually 10-30cm
- Pale brown to greenish brown with darker bands along the body
- Has a long snout
- Long body (often called a straightened seahorse)
- Distinctive hump on top of head behind eyes

Lledlen

(*Pleuronectes platessa*)



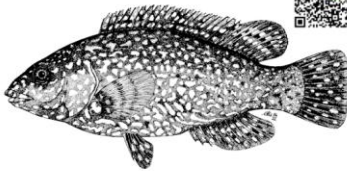
Gwely y Môr

Dydd / Nôs

- Pysgod
- Rhwng 20-30cm
- Brown gyda smotiau oren neu goch
- Siâp diemwnt
- 2 llygaid ar un ochr
- Cynffon rownd, fel ffan
- Asgell y cefn a refrol yn estyn ar draws pob ochr y corff

Gwrachen Fraith

(*Labrus bergyllta*)



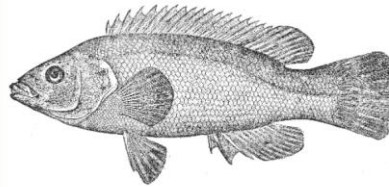
Dŵr Bas / Gwely y Môr

Dydd / Nôs

- Pysgod
- Fel arfer 18-25cm
- Cael corff llydan
- Coch/brown i wyrdd
- Cael smotiau golau dros y corff
- Un asgell y cefn hir sy'n estyn ar draws y cefn i gyd
- Cynffon rownd

Gwrachen Resog

(*Labrus mixtus*)



Glannau Rhynglanw / Dŵr Bas

Dydd / Nôs

- Pysgod
- Fel arfer 20-30cm
- Corff hir a main
- Patrymau lliwgar (Un o'r pysgod mwyaf lliwgar yn y DU)
- Benywod yn oren gyda smotiau du
- Gwrywod yn cael stripiau glas electrig

Llyngyren Wyntyllog

(*Bispira volutacornis*)



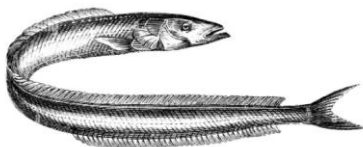
Dŵr Bas / Gwely y Môr

Dydd / Nôs

- Mwydyn
- Lan i 40cm
- Llawer o dentaclau yn dod o'r ben, cael ei galw'n 'ffan' (cael ei gymharu i frwsh plu)
- Ffan gallu bod yn wyn, melyn neu frown
- Corff hir, brown a hyblyg

Llymrien Fach

(*Ammodytes tobianus*)

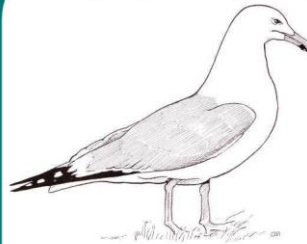


Glannau Rhynglanw / Dŵr Bas

Dydd / Nôs

- Pysgod
- Fel arfer 10-20cm
- Arian mewn lliw
- Cael eu ffeindio wedi'i gladdu yn y tywad
- Corff hir, main
- Gën bwyntiog
- Cynffon bach, sy'n edrych fel ffyr

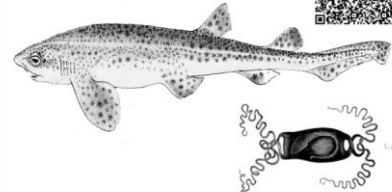
Gwylan y penwaig (*Larus argentatus*)



Glannau Rhynglanw / Glannau Mwdlyd / Aber

Dydd / Nôs

- Aderyn
- Pen gwyn gyda phig melyn a choesau pinc
- Pluen wen, adain lwyd gyda blaenau adain ddu
- Lled-asgell lan i 160cm
- Gallu deifio 6 troedfedd i ddal ysglyfaeth



Glannau Rhynglanw / Dŵr Bas

Dydd / Nôs

- Pysgod (siarc!!)
- 50-60cm
- Cael llygaid fel cath a chroen hufen gyda smotiau brown
- Babanod morgi yn datblygu mewn pwrs y fôr-forwyn, pan maen nhw ddeor, gall ffeindio'r rhain ar y traeth!

Cranc meddal (*Pagurus bernhardus*)

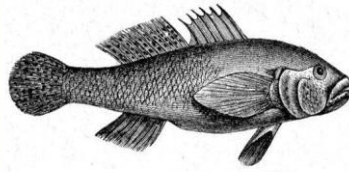


Glannau Rhynglanw / Dŵr Bas

Dydd / Nôs

- Cranc
- Byw mewn gregyn malwen gwag
- Pincer dde yn mwy na'r chwith
- Corff coch/brown
- Llygaid rownd

Gobi (*Gobiusculus flavescens*)



Glannau Rhynglanw / Dŵr Bas

Dydd / Nôs

- Pysgod mawr
- Fel arfer 10cm
- Corff hir, main
- Marciau brown
- 2 asgell y cefn
- Cynffon fel ffan
- Ceg a llygaid

Morwellt (*Zostera marina*)

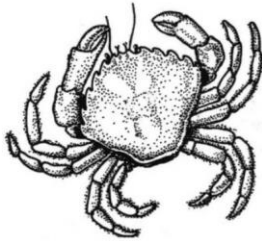


Dŵr Bas / Dŵr mwy dwfn

Dydd / Nôs

- Planhigyn
- Rhwng 30-50cm
- Gwyrdd
- Tyfu mewn dolydd
- Dail yn cael blaenau rownd
- Gallu bod yn gludair neu hollol danddrwr

Cranc glas (*Carcinus maenas*)

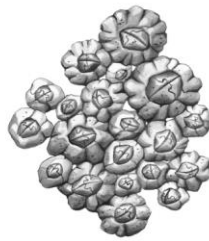


Glannau Rhynglanw / Dŵr Bas

Dydd / Nôs

- Cranc
- Rhwng 4-9cm
- Mwyafrit yn wyrdd, gallu bod brown i goch/oren
- Gregyn wedi'i siapio fel clam
- Cuddio o dan gerrig

Barnacle (*Pollicipes pollicipes*)



Glannau Rhynglanw / Wedi'i glymu i gerrig

Dydd / Nôs

- Di-asgwrn-cefn caled
- Gwyn / Llwyd mewn lliw
- Llai na modfedd
- Cael ei weld mewn grwpiau, wedi'i glymu i arwynebau

Blodyn y Gwynt (*Ane monia viridis*)

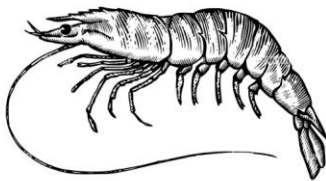


Glannau Rhynglanw / Gwely Môr / Dŵr Bas

Dydd / Nôs

- Blodyn y Gwynt
- Fel arfer 8cm
- Wedi'i glymu i arwynebau sodd
- Cael tentaclau hir, tonnog
- Tentaclau gyda blaenau porffor

Berdysen (*Palaemon serratus*)

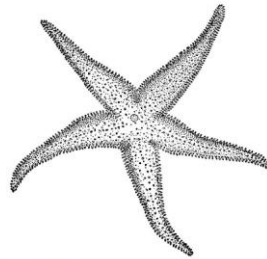


Glannau Rhynglanw / Gwely Môr

Dydd / Nôs

- Di-asgwrn-cefn
- Fel arfer 4-10cm
- Corff tryloyw
- Rhesi tywyll ar hyd y corff
- Bandiau melyn a glas ar y coesau
- Cynffon fel ffan
- Dau bâr o deimlydd hir

Seren Y Fôr (*Asterias rubens*)

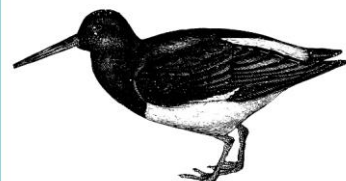


Glannau Rhynglanw / Gwely Môr

Dydd / Nôs

- Di-asgwrn-cefn
- Fel arfer 10-30cm
- Oren
- Mae ganddyn nhw 5 braich sy'n gymesur
- Drain gwelwi ar hyd y corff
- Fel arfer mewn grwpiau o dan gerrig

Pioden y Môr (*Haematopus ostralegus*)

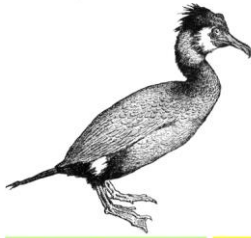


Glannau Rhynglanw / Glannau Mwdlyd

Day / Night

- Aderyn
- Mawr, stwcin
- Gallu cael lled esgyll lan i 80cm
- Pluen du a gwyn
- Pig hir, coch a choesau pinc
- Pig oren / coch
- Gallu cael ei weld beisio dŵr yn ddŵr bas

Mulfran (*Phalacrocorax carbo*)

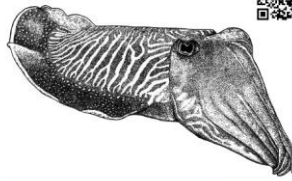


Glannau Rhynglanw /
Lagŵn Arfordirol / Aber

Dydd /
Nôs

- Aderyn ar ei chlyn a'i gën
- Gallu cael lled esgyll lan l Pen mawr, triogl gyda phig mawr
- Cael pluen frown a du
- Cael cwtau gwyn

Ystifflog (*Sepia officinalis*)



Gwely Môr Tywodog /
Morwellt / Dŵr Bas

Dydd /
Nôs

- Seffalopod o gwmpas y geg
- Gallu tyfu i 45cm • Pig-fel-gën gyda llygaid mawr
- Fel arfer brown / oren ond gallu ymaddasu ei liw
- Cael 8 braich gyda sugnwr
- Cael dau dentael

Octopws Cyffredin
(*Octopus vulgaris*)

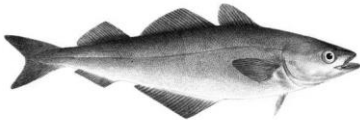


Gwely Môr Tywodog /
Morwellt / Dŵr Bas

Dydd /
Nôs

- Seffalopod a sugnwr
- Oren / Brown • Gallu gwasgu ond gall mewn i fannau ymaddasu i guddliwio
- Cael 8 tentael wedi'i gorchuddio
- Tynn a chuddio mewn agennau bach

Morlas (*Pollachius pollachius*)

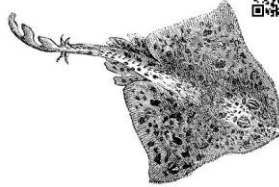


Dŵr bas / Morwellt

Dydd /
Nôs

- Pysgod Cael barfan fach sy'n ymestyn o'i gën
- Gallu tyfu i 4 troed fer
- Llwyd gyda tor arian
- Cael 3 asgell cefn

Morgath Bigog (*Raja clavata*)



Gwely Môr / Morwellt

Cyfnosi /
Nôs

- Gath fôr wely'r môr
- Gallu tyfu lan i 1m • Cael casgliad o bigau ar y gynffon a'r cefn
- Cael patrymau brown sy'n ymddwyn fel cuddliw ar
- Oren olau / corff brown - llwyd

Gragen Coch Mwyaf
(*Nucella lapillus*)

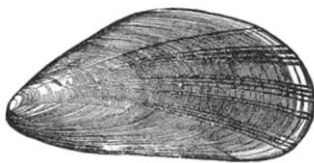


Glannau Isel / Bwlch yn greigiau

Dydd /
Nôs

- Cragenbysgodyn Cael rhigol ar wyneb isaf y gragen
- Gwyn / Melyn
- 3-6 cm
- Cragen tu allan galed
- Cragen troell, fel cragen malwen

Cragen Las (*Mytilus edulis*)

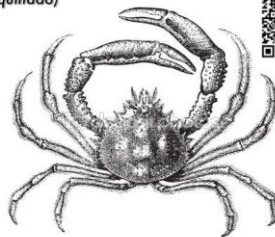


Glannau / Beision, yn sownd i gerrig

Dydd /
Nôs

- Cragenbysgodyn • Sownd i gerrig mewn 'gwelyau' cragen las
- Glas / Porffor / Du
- Lan i 10cm
- Cragen tu allan galed, triogl

Cranc Pryf-Cop (*Maja squinado*)

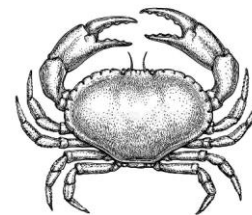


Gwely môr / Morwellt

Dydd /
Nôs

- Cranc chwyddau cael ei ffeindio ar draws y corff
- Coch / Brown
- Grafanciau gwyn
- Corff gallu tyfu lan i 20cm
- Pigau a Cranc mwyaf yn Ewrop

Cranc Coch (*Cancer pagurus*)



Tir / Gwely Môr /
Morwellt

Dydd /
Nôs

- Cranc Cregyn llyfn
- Oren / Brown • Cuddio o dan gerrig
- 10-20cm
- Grafanciau du
- Cregyn steil crawen-pei